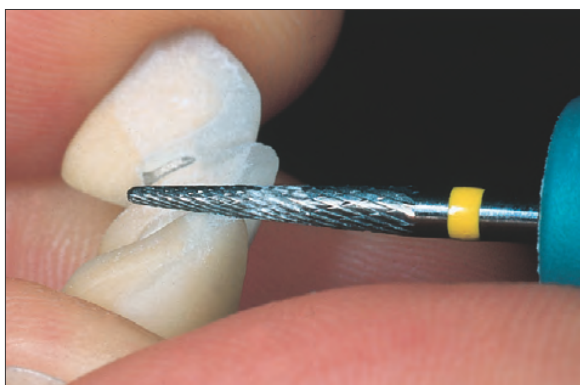


Hartmetallfräser

Tungsten Carbide Cutters

Fraises en Carbure de Tungstène de Laboratoire



Das Komplettprogramm mit 19 Verzahnungsarten zur Bearbeitung aller zahntechnischen Werkstoffe.

A complete range with 19 blade configurations for trimming all materials used in dental technology.

Le programme complet avec 19 types de dentures, pour le travail de tous les matériaux utilisés en technique dentaire.

Labor • Laboratory • Laboratoire

Die Anwendungsempfehlungen zeigen übersichtlich alle Möglichkeiten der NTI Hartmetallfräser

This chart shows clearly all the applications of NTI tungsten carbide cutters.

Les conseils d'utilisation présentent d'une manière très détaillée les possibilités des fraises en carbure NTI.

| Anwendungsempfehlungen • Hartmetallfräser | | | |
|--|--|------------|----------------|
| | | | |
| <p>Von den Verzahnungen mit dem * sind ausgewählte Formen mit Millenniumbeschichtung erhältlich.</p> | | | |
| Schliff | Verzahnung | ISO | Schliff |
| SFE | Kreuzverzahnung superfein | 110 | SCN |
| SFN | Einfachverzahnung superfein | 102 | XCE |
| SFTE | Superfeine Verzahnung, Titanitrid-Beschichtung | 110 | XCN |
| FE | Kreuzverzahnung fein | 140 | GE |
| CE | Kreuzverzahnung standard | 190 | NP |
| CN | Einfachverzahnung standard | 175 | QSCN |
| SCE | Kunststoff spezial/Kreuzverzahnung grob | 220 | DF |
| | | | D |
| | | | *QF |
| | | | QSF |
| | | | GTI |
| | | | FLE-LE |
| | | | ISO |
| | | | DF |
| | | | D |
| | | | *QF |
| | | | QSF |
| | | | GTI |
| | | | FLE-LE |
| | | | ISO |
| | | | DF |
| | | | D |
| | | | *QF |
| | | | QSF |
| | | | GTI |
| | | | FLE-LE |
| | | | ISO |
| | | | DF |
| | | | D |
| | | | *QF |
| | | | QSF |
| | | | GTI |
| | | | FLE-LE |
| | | | ISO |
| | | | DF |
| | | | D |
| | | | *QF |
| | | | QSF |
| | | | GTI |
| | | | FLE-LE |
| | | | ISO |
| | | | DF |
| | | | D |
| | | | *QF |
| | | | QSF |
| | | | GTI |
| | | | FLE-LE |
| | | | ISO |
| | | | DF |
| | | | D |
| | | | *QF |
| | | | QSF |
| | | | GTI |
| | | | FLE-LE |
| | | | ISO |
| | | | DF |
| | | | D |
| | | | *QF |
| | | | QSF |
| | | | GTI |
| | | | FLE-LE |
| | | | ISO |
| | | | DF |
| | | | D |
| | | | *QF |
| | | | QSF |
| | | | GTI |
| | | | FLE-LE |
| | | | ISO |
| | | | DF |
| | | | D |
| | | | *QF |
| | | | QSF |
| | | | GTI |
| | | | FLE-LE |
| | | | ISO |
| | | | DF |
| | | | D |
| | | | *QF |
| | | | QSF |
| | | | GTI |
| | | | FLE-LE |
| | | | ISO |
| | | | DF |
| | | | D |
| | | | *QF |
| | | | QSF |
| | | | GTI |
| | | | FLE-LE |
| | | | ISO |
| | | | DF |
| | | | D |
| | | | *QF |
| | | | QSF |
| | | | GTI |
| | | | FLE-LE |
| | | | ISO |
| | | | DF |
| | | | D |
| | | | *QF |
| | | | QSF |
| | | | GTI |
| | | | FLE-LE |
| | | | ISO |
| | | | DF |
| | | | D |
| | | | *QF |
| | | | QSF |
| | | | GTI |
| | | | FLE-LE |
| | | | ISO |
| | | | DF |
| | | | D |
| | | | *QF |
| | | | QSF |
| | | | GTI |
| | | | FLE-LE |
| | | | ISO |
| | | | DF |
| | | | D |
| | | | *QF |
| | | | QSF |
| | | | GTI |
| | | | FLE-LE |
| | | | ISO |
| | | | DF |
| | | | D |
| | | | *QF |
| | | | QSF |
| | | | GTI |
| | | | FLE-LE |
| | | | ISO |
| | | | DF |
| | | | D |
| | | | *QF |
| | | | QSF |
| | | | GTI |
| | | | FLE-LE |
| | | | ISO |
| | | | DF |
| | | | D |
| | | | *QF |
| | | | QSF |
| | | | GTI |
| | | | FLE-LE |
| | | | ISO |
| | | | DF |
| | | | D |
| | | | *QF |
| | | | QSF |
| | | | GTI |
| | | | FLE-LE |
| | | | ISO |
| | | | DF |
| | | | D |
| | | | *QF |
| | | | QSF |
| | | | GTI |
| | | | FLE-LE |
| | | | ISO |
| | | | DF |
| | | | D |
| | | | *QF |
| | | | QSF |
| | | | GTI |
| | | | FLE-LE |
| | | | ISO |
| | | | DF |
| | | | D |
| | | | *QF |
| | | | QSF |
| | | | GTI |
| | | | FLE-LE |
| | | | ISO |
| | | | DF |
| | | | D |
| | | | *QF |
| | | | QSF |
| | | | GTI |
| | | | FLE-LE |
| | | | ISO |
| | | | DF |
| | | | D |
| | | | *QF |
| | | | QSF |
| | | | GTI |
| | | | FLE-LE |
| | | | ISO |
| | | | DF |
| | | | D |
| | | | *QF |
| | | | QSF |
| | | | GTI |
| | | | FLE-LE |
| | | | ISO |
| | | | DF |
| | | | D |
| | | | *QF |
| | | | QSF |
| | | | GTI |
| | | | FLE-LE |
| | | | ISO |
| | | | DF |
| | | | D |
| | | | *QF |
| | | | QSF |
| | | | GTI |
| | | | FLE-LE |
| | | | ISO |
| | | | DF |
| | | | D |
| | | | *QF |
| | | | QSF |
| | | | GTI |
| | | | FLE-LE |
| | | | ISO |
| | | | DF |
| | | | D |
| | | | *QF |
| | | | QSF |
| | | | GTI |
| | | | FLE-LE |
| | | | ISO |
| | | | DF |
| | | | D |
| | | | *QF |
| | | | QSF |
| | | | GTI |
| | | | FLE-LE |
| | | | ISO |
| | | | DF |
| | | | D |
| | | | *QF |
| | | | QSF |
| | | | GTI |
| | | | FLE-LE |
| | | | ISO |
| | | | DF |
| | | | D |
| | | | *QF |
| | | | QSF |
| | | | GTI |
| | | | FLE-LE |
| | | | ISO |
| | | | DF |
| | | | D |
| | | | *QF |
| | | | QSF |
| | | | GTI |
| | | | FLE-LE |
| | | | ISO |
| | | | DF |
| | | | D |
| | | | *QF |
| | | | QSF |
| | | | GTI |
| | | | FLE-LE |
| | | | ISO |
| | | | DF |
| | | | D |
| | | | *QF |
| | | | QSF |
| | | | GTI |
| | | | FLE-LE |
| | | | ISO |
| | | | DF |
| | | | D |
| | | | *QF |
| | | | QSF |
| | | | GTI |
| | | | FLE-LE |
| | | | ISO |
| | | | DF |
| | | | D |
| | | | *QF |
| | | | QSF |
| | | | GTI |
| | | | FLE-LE |
| | | | ISO |
| | | | DF |
| | | | D |
| | | | *QF |
| | | | QSF |
| | | | GTI |
| | | | FLE-LE |
| | | | ISO |
| | | | DF |
| | | | D |
| | | | *QF |
| | | | QSF |
| | | | GTI |
| | | | FLE-LE |
| | | | ISO |
| | | | DF |
| | | | D |
| | | | *QF |
| | | | QSF |
| | | | GTI |
| | | | FLE-LE |
| | | | ISO |
| | | | DF |
| | | | D |
| | | | *QF |
| | | | QSF |
| | | | GTI |
| | | | FLE-LE |
| | | | ISO |
| | | | DF |
| | | | D |
| | | | *QF |
| | | | QSF |
| | | | GTI |
| | | | FLE-LE |
| | | | ISO |
| | | | DF |
| | | | D |
| | | | *QF |
| | | | QSF |
| | | | GTI |
| | | | FLE-LE |
| | | | ISO |
| | | | DF |
| | | | D |
| | | | *QF |
| | | | QSF |
| | | | GTI |
| | | | FLE-LE |
| | | | ISO |
| | | | DF |
| | | | D |
| | | | *QF |
| | | | QSF |
| | | | GTI |
| | | | FLE-LE |
| | | | ISO |
| | | | DF |
| | | | D |
| | | | *QF |
| | | | QSF |

Hartmetallfräser • Tungsten Carbide Cutters • Fraises en carbure de tungstène

GE Kreuzverzahnung grob • Bulk Cross Cut • Denture croisée grosse

Labor • Laboratory • Laboratoire

| | | | |
|-----------------------------|------------------|------------------|------------------|
| Größe/Size/Taille ø 1/10 mm | 045 | 060 | 060 |
| L mm | 14,1 | 13,9 | 12,2 |
| Shank | ISO | | |
| HP | 500 104 ... | 201 221 ... | 274 221 ... |
| REF HF ... | 079GE-045 | 251GE-060 | 351GE-060 |



HF251GE-060

QSCN Einfachverzahnung mit Querhieb • Coarse Straight Blade Cross Cut • Denture simple avec taille transversale

| | | | | | | |
|-----------------------------|-------------|--------------------|--------------------|--------------------|---------------------|--------------------|
| Größe/Size/Taille ø 1/10 mm | 040 | 045 | 023 | 060 | 060 | 070 |
| L mm | 9,0 | 14,1 | 14,0 | 14,2 | 12,2 | 14,2 |
| Shank | ISO | | | | | |
| HP | 500 104 ... | 237 176 ... | 201 176 ... | 201 176 ... | 275 176 ... | 263 176 ... |
| REF HF ... | | 077QSCN-040 | 079QSCN-045 | 261QSCN-023 | L251QSCN-060 | 351QSCN-060 |
| | | | | | 351QSCN-070 | |



HFL251QSCN-060

DF Diamantschliff fein, angeraute Oberfläche
Diamond Fine Cut For Slightly Rough Surface
Denture diamantée fine à surface rugueuse

| | |
|-----------------------------|------------------|
| Größe/Size/Taille ø 1/10 mm | 045 |
| L mm | 14,1 |
| Shank | ISO |
| HP | 500 104 ... |
| REF HF ... | 079DF-045 |

D Diamantschliff Prismenoberfläche
Diamond Cut With Prism Surface
Denture diamantée à surface prismatique

| | |
|-----------------------------|-----------------|
| Größe/Size/Taille ø 1/10 mm | 045 |
| L mm | 14,1 |
| Shank | ISO |
| HP | 500 104 ... |
| REF HF ... | 079D-045 |



HF079D-045

QF Spiralverzahnung fein • Spiral Fine Cut • Denture hélicoïdale fine

| | | | | | | | | | |
|-----------------------------|-------------|-------------------|------------------|------------------|------------------|------------------|------------------|------------------|------------------|
| Größe/Size/Taille ø 1/10 mm | 023 | 040 | 023 | 023 | 023 | 040 | 060 | 023 | 023 |
| L mm | 5,3 | 13,7 | 9,0 | 9,5 | 10,5 | 11,5 | 13,9 | 10,5 | 14,0 |
| Shank | ISO | | | | | | | | |
| HP | 500 104 ... | 237 134 ... | 201 134 ... | 141 134 ... | 289 134 ... | 199 134 ... | 274 134 ... | 274 134 ... | 185 134 ... |
| REF HF ... | | L077QF-023 | 079QF-040 | 129QF-023 | 139QF-023 | 199QF-023 | 251QF-040 | 251QF-060 | 257QF-023 |
| | | | | | | | | | 261QF-023 |

Bitte Drehzahlbereiche beachten (Drehzahltafel - Seite 11.15) / Please observe Recommended speeds (speed chart - page 11.15) / Respecter les vitesses de rotation recommandées (voir à la page 11.15)

Hartmetallfräser • Tungsten Carbide Cutters • Fraises en carbure de tungstène

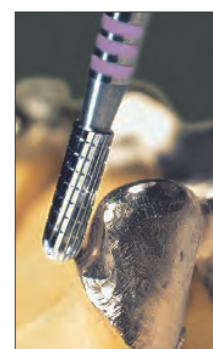
QF Spiralverzahnung fein • Spiral Fine Cut • Denture hélicoïdale fine

| | | | |
|-----------------------------|------------------|------------------|------------------|
| Größe/Size/Taille ø 1/10 mm | 008 | 009 | 010 |
| L mm | 4,2 | 4,2 | 4,2 |
| Shank <small>ISO</small> | | | |
| HP 500 104 ... | 196 134 ... | 196 134 ... | 196 134 ... |
| REF HF ... | 138QF-008 | 138QF-009 | 138QF-010 |

Zum Feinausarbeiten von Fissuren
 Optimal Cosmetic Contouring and Fine Works on Fissures
 Denture hélicoïdale fine pour la finition de sillons

QSF Spiralverzahnung superfein • Spiral Superfine Cut • Denture hélicoïdale superfine

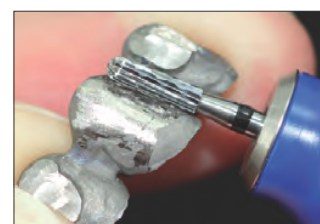
| | | | | | | | |
|-----------------------------|-------------------|-------------------|-------------------|-------------------|-------------------|-------------------|--------------------|
| Größe/Size/Taille ø 1/10 mm | 040 | 023 | 008 | 016 | 023 | 023 | 060 |
| L mm | 13,7 | 8,0 | 4,2 | 8,0 | 8,0 | 8,0 | 14,2 |
| Shank <small>ISO</small> | | | | | | | |
| HP 500 104 ... | 201 137 ... | 141 137 ... | 196 137 ... | 198 137 ... | 198 137 ... | 289 137 ... | 275 137 ... |
| REF HF ... | 079QSF-040 | 129QSF-023 | 138QSF-008 | 138QSF-016 | 138QSF-023 | 139QSF-023 | L251QSF-060 |



HF129QSF-023

GTi Titanverzahnung grob • GTi Special cutter for titanium • GTi Fraise spéciale pour le titane

| | | | | | |
|-----------------------------|-------------------|-------------------|-------------------|-------------------|-------------------|
| Größe/Size/Taille ø 1/10 mm | 040 | 023 | 016 | 023 | 023 |
| L mm | 13,7 | 8,0 | 8,0 | 8,0 | 8,0 |
| Shank <small>ISO</small> | | | | | |
| HP 500 104 ... | 201 194 ... | 141 194 ... | 198 194 ... | 198 194... | 289 194 ... |
| REF HF ... | 079GTi-040 | 129GTi-023 | 138GTi-016 | 138GTi-023 | 139GTi-023 |



HF129GTi-023

FLE / LE Linkshänderfräser Spezialfräser, linksschneidend • L-Cut Special Cutters • Fraise spéciale pour gauchers

| | | | | |
|-----------------------------|-------------------|-------------------|------------------|------------------|
| Größe/Size/Taille ø 1/10 mm | 045 | 023 | 045 | 060 |
| L mm | 12,9 | 16,0 | 12,9 | 13,9 |
| Shank <small>ISO</small> | | | | |
| HP 500 104 ... | 200 140 ... | 292 140 ... | 200 240 ... | 274 240 ... |
| REF HF ... | 079FLE-045 | 295FLE-023 | 079LE-045 | 251LE-060 |



HF251LE-060

LE = Kreuzverzahnung grob
 LE = Cross Cut Coarse
 LE = Denture croisée grosse

FLE = FEIN • FINE • FINE